

The biggest challenge of this architectural project is to create a new cultural plateau for Changsha City, which simultaneously serves as an organic link between the urban context and waterfront. This new urban plateau has two surfaces that respond to and articulate internal function. The external environment turns out to be new urban space blessed with the richness of the great nature, which has been given a vigorous touch by the progression of the city.

Changsha new culture platform creates a soft surface, under which the music hall, museum, and library are gathered together. The waterfront landscape is presented again in this three-dimensional platform. Three

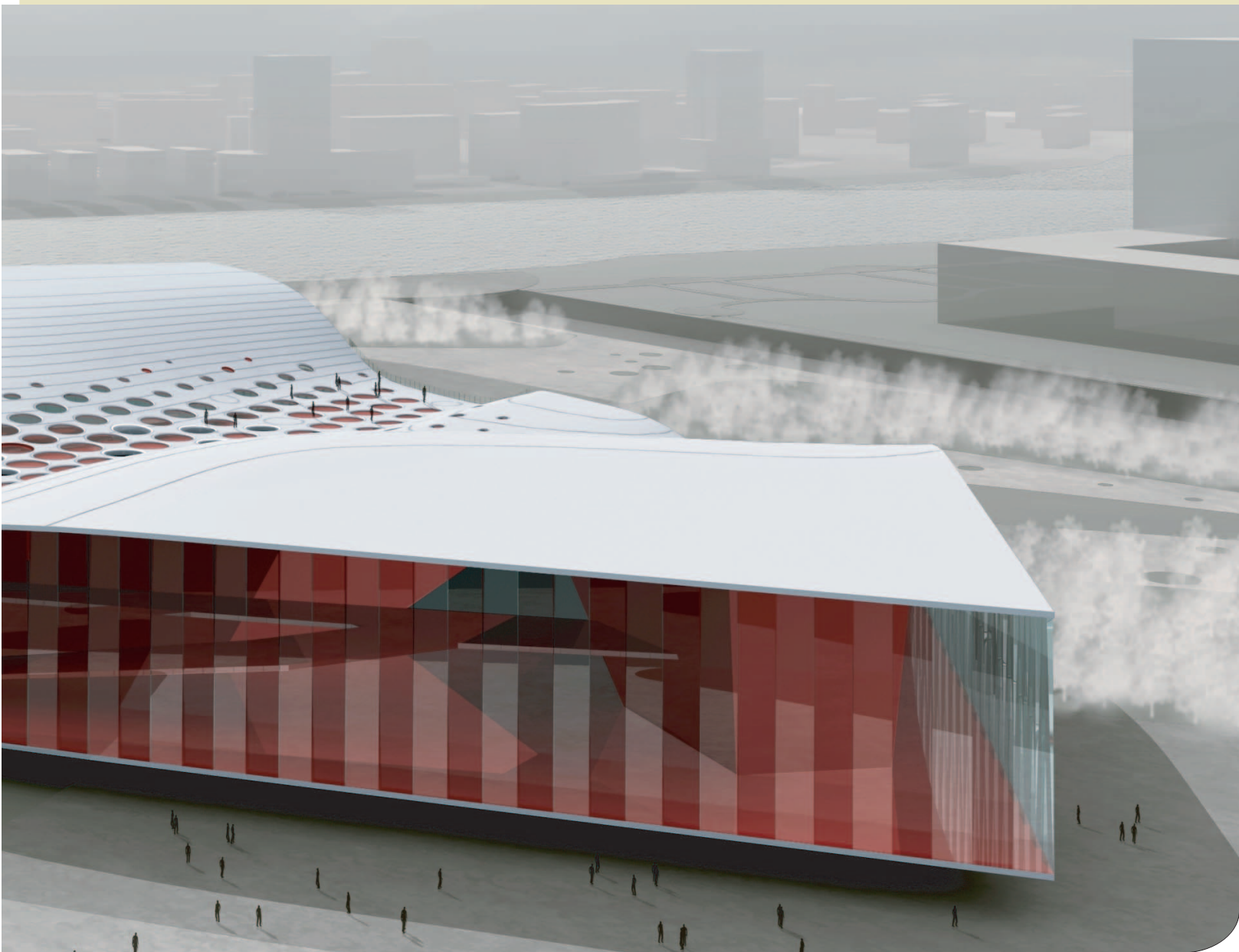
cultural programs have greatly promoted the image of Culture Park, which adds to the charm of Changsha city. People may enjoy all cultural facilities, at different elevated levels inside and outside of the building, at any time in here. Large scale activities, be it exhibitions and entertainment in the daytime, or carnivals in the evening, could be carried out here in this Cultural Park.

Design Architect : REX

Executive Architect : Gruen Associates

Consultants : Arup, 2x4, Davis Langdon, Dorsserblesgraaf, Front, KPFF, Quinze & Milan, Scape, Tillotson Design Associates

Birds-eye view of the Culture Park



IMAGES COURTESY THE ARCHITECT