

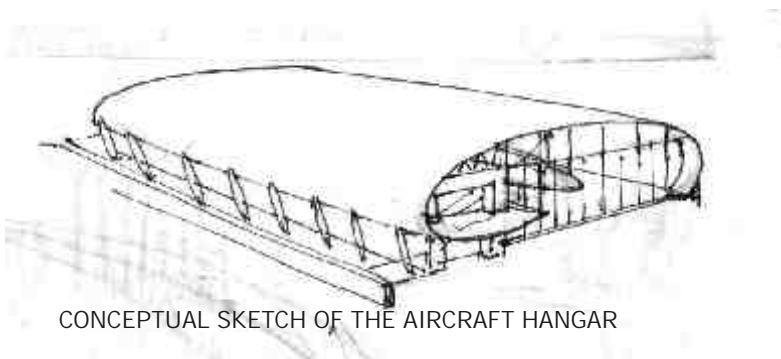


# Taking flight...

*The best way to learn new things is to learn them, unlearn them and then relearn them by staying open to different ways of getting things done. And precisely this art of 'participating with the flow' has enabled Mumbai based firm Krishnan Parvez Architects, KPa to arrive at the end solution - to the air hangar.*



Text : Pragnya Rao  
Photographs : Courtesy the architects



CONCEPTUAL SKETCH OF THE AIRCRAFT HANGAR

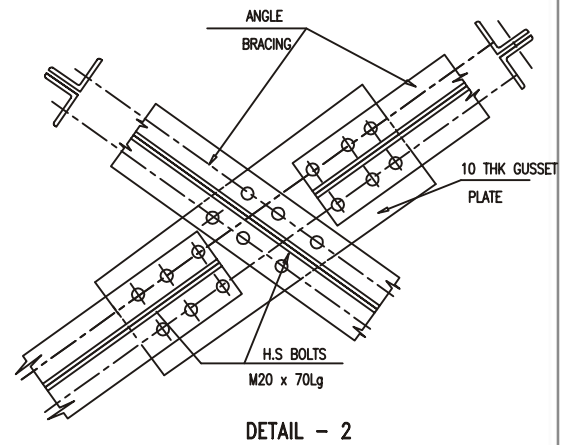


3

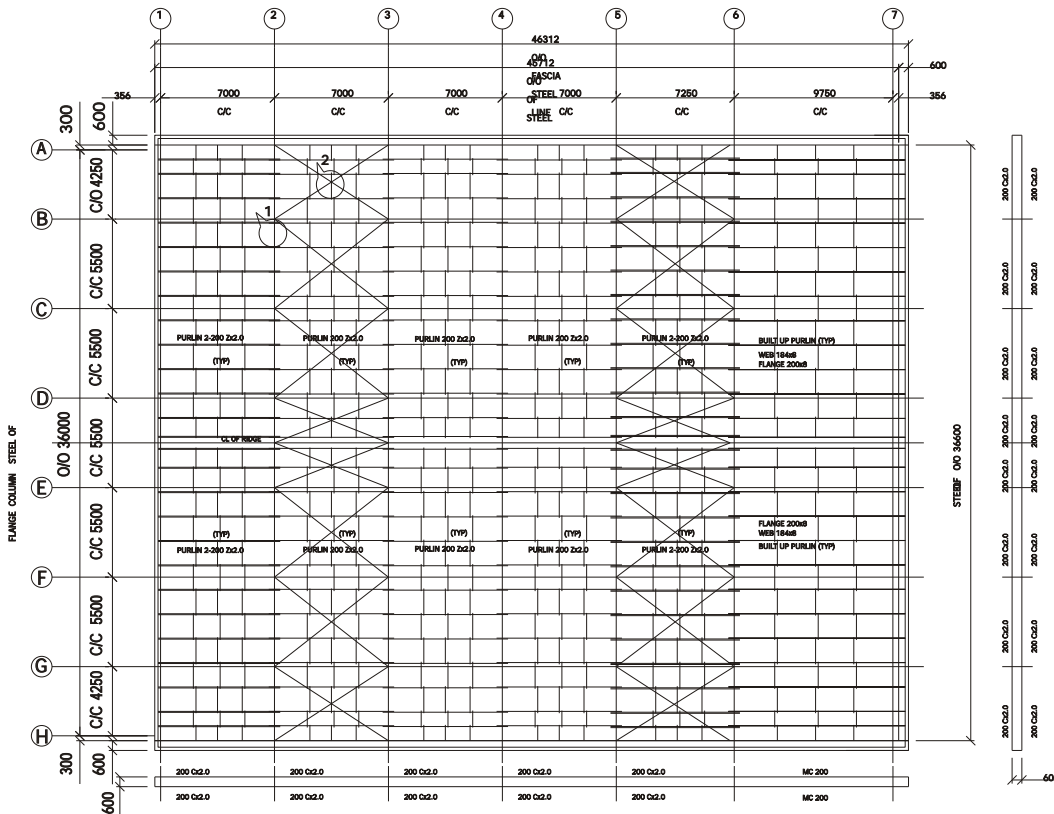
"We require an aircraft hangar that meets Y-1 standards" exclaims Parvez. Now when you have a brief that is as concise and dreary like this, you need all your creative juices flowing in full flow! Credit it to the exuberance, the thrill, the challenge or the charm of 'first's'; the aircraft hangar sure got all of it together. Says Parvez, "Though initially overwhelming, it was nonetheless very exciting to work on a project like this. We had never done a hangar before, so it became all the more important that we got the basics right". A lot of researching, brainstorming sessions, innumerable doodles - later they arrived at what was the first draft of the hangar. Sinuous and enchanting, the design sure made heads turn. However, like with most 'beginnings', this too faced its share of teething troubles. Budget constraints, lack of execution technology vis-à-vis curved sections as well as various regulations from the Airport Authority of India meant that the design be started from scratch again.



4



DETAIL - 2



ROOF FRAMING PLAN

1. A cross lattice of steel sections is not only structural but also very aesthetic in appearance. The night only adds to its allure.
2. Very dominant and imposing, the facade of the air hangar reflects everybit of the high security zone its meant to be.
- 3&4. The interiors mainly in classic white coupled with tremendous height makes the space very alluring. The seamless flooring in pristine white is a conscious decision to match up to international standards, which also inadvertently adds a sense of volume to the space.



5



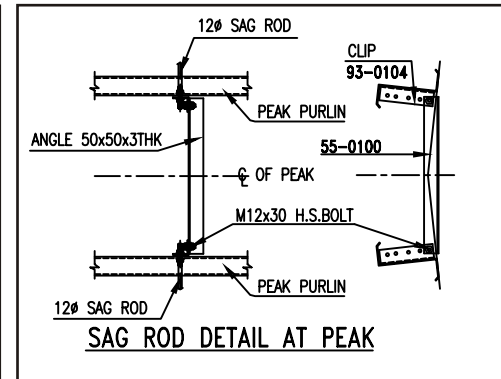
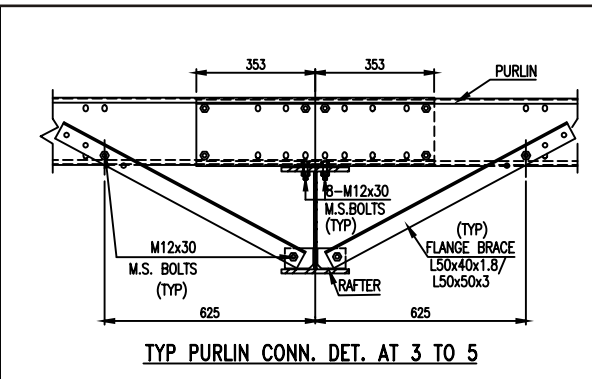
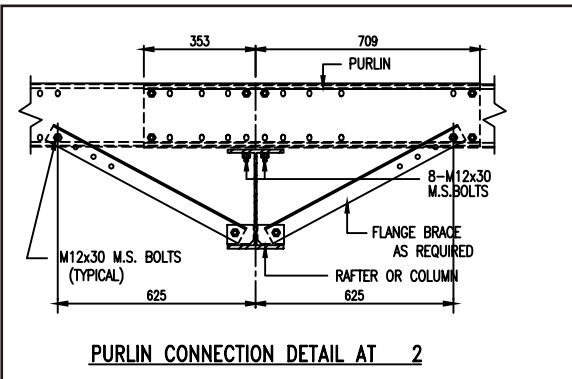
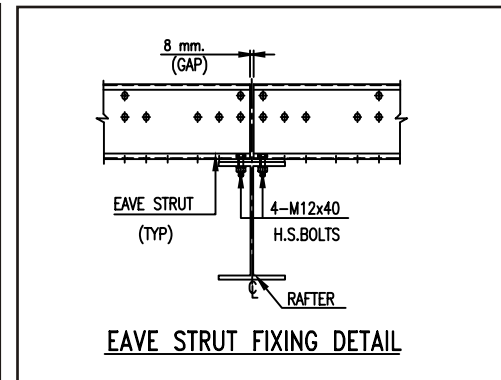
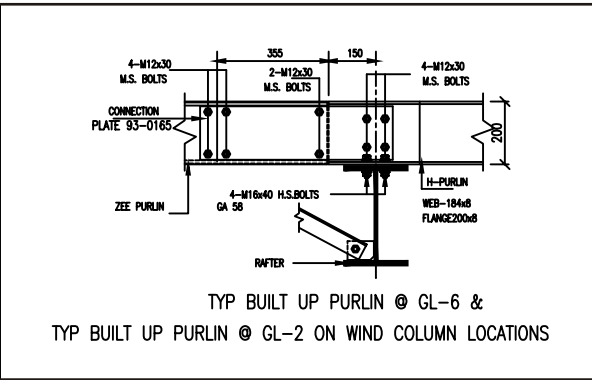
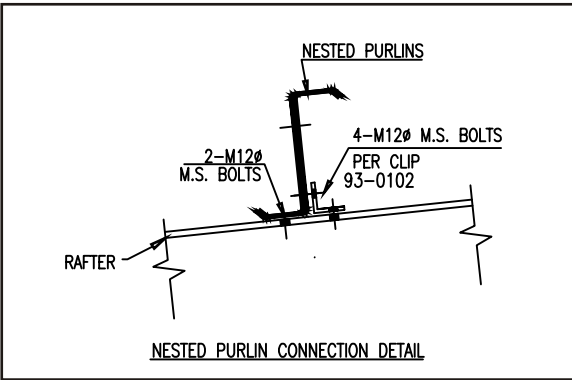
6



7



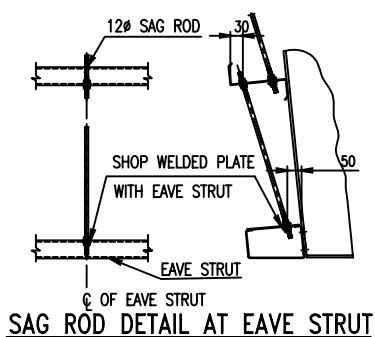
8





9

This learning, unlearning and relearning process took about three months before they were finally ready to take off! Says Parvez, "The project demanded several sensibilities; for us to be responsive, sensitive, committed to the needs of the project, to the environment, to its functionality, to work effectively within the economics involved, to the aesthetics and most importantly, to be a competitive good design". The hangar at the Mumbai Domestic Airport has been conceptualised as a space largely for transit, in the process creating a fine balance within the internal space by integrating the quintessential utilitarian 'hangar' for three planes into a stylised corporate identity. Although the design involvement required within the hangar, primarily an open space, was minimal; the challenge came while integrating and coordinating the engineering with the aesthetics. Also, the façade design became integral to the entire look of the space since it provided the opportunity to introduce linear spatial design forms into the parameters of conventional spaces and create a work environment for the back office that was not only functional by means of utility but also contemporary by means of aesthetics. Everywhere you look today, from buildings and landscapes, to commercial products and public services, design has taken on new meanings. Design isn't just about decoration; it's a critical component of how we communicate, collaborate, and compete. But behind the "look and feel" of any good design are a host of carefully conceived principles: fundamental propositions that define the essence of the design. The Air hangar by KPa echoes just that, 'essentials of good design!' ■

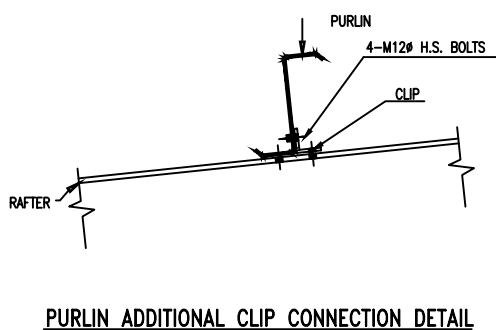


5&7. The waiting lounge area overlooks the landscaped courtyard, which adds visual relief to the hangar space.

6. With just a hint of colour, the space almost doubles up owing to the glossy finish and application of white on both the horizontal and vertical planes.

8. The landscaped courtyard sees an interesting interplay of light and shadow.

9. The staircase here sees the application of the accent colour, which is red that is seen in bits and across the site.



#### FACT FILE

|                             |                                    |
|-----------------------------|------------------------------------|
| Architects                  | : Krishnan Parvez architects (KPa) |
| Structural consultants      | : SPACPL                           |
| Service consultants         | : Eskayem                          |
| Fire fighting consultant    | : M. R. Kamath                     |
| Pre-engineered building     | : Kirby building systems           |
| Civil & services contractor | : B. E. Billimoria                 |
| Interior contractors        | : Image Interiors                  |
| Project duration            | : February 2004 to October 2004    |